

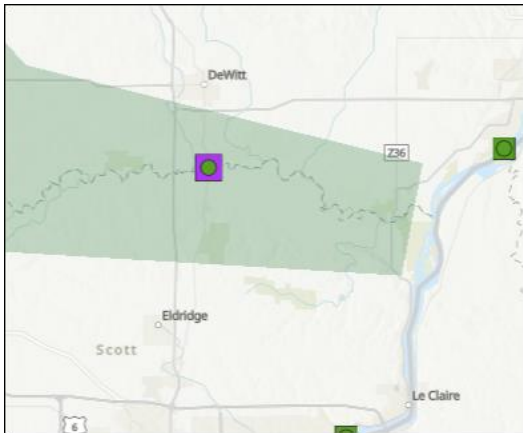


SCOTT COUNTY EMERGENCY MANAGEMENT AGENCY
 Bettendorf Mayor Bob Gallagher, Chair | Brian Payne EMA Director
 1100 East 46th Street, Davenport, Iowa 52807 | (563) 484-3050
 www.readyscottcounty.com

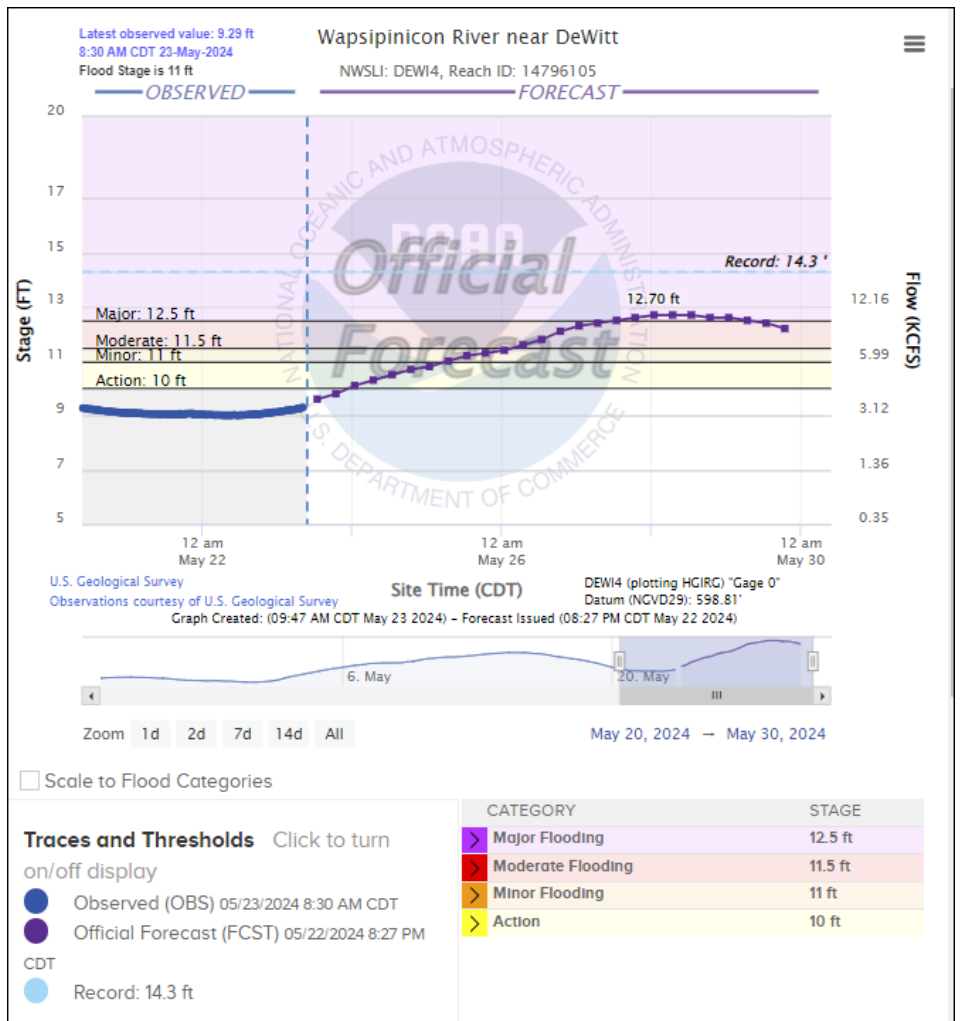
Media Release

Wapsipinicon River is Projected to Reach a Major Flood Stage

The Scott County Emergency Management Agency encourages residents and those with interests near the river to monitor rising water levels and be prepared for possible flooding. The current hydrograph information from the National Weather Service predicts that the Wapsipinicon will reach a **major flood stage, 12.70'**, by **Tuesday, 05/28/2024**.



[Click here to be directed to the hydrograph.](#)



Please direct your local media inquiries to:

Brian P. Payne
 Director
 Scott County Emergency Management Agency
 (563) 484-3056 (O)
brian.payne@scottcountyiowa.gov